

ems freezer room sliding door GS 140

Features

Robust, easy to use sliding door. Can be used in all areas where the combination of intensive, demanding use, e.g. from stackers etc., and high climatic requirements is required.

Range of application	up to -28°C
Optional for fast-freezing rooms	up to -40°C
U value door leaf in W/m ² K	0.17 (0.12 for fast-freezing room design)

Dimensions:

Clear width (CW):	max. 3,500
Clear height (CH):	max. 3,500

Please enquire concerning further dimensions

Details of the ems freezer room sliding door GS 140

Door leaf

Door leaf thickness 140 mm (fast freezing room 200 mm), foamed with PU rigid foam, foaming agent CFC-free and HCFC-free.

Sealing

On three sides with dual, grease-resistant APTK foam rubber lip insertion seal, held in plastic profiles. Fitted dual extruded seal in lower section.

All sealings are easy to replace.

Door frames

Ready to install with brick angles to brickwork assembly, or with clamp frame for panel installation. The frames can be easily replaced in case of mechanical damage. Ground level light metal extruded threshold, or without threshold.

Option: Lateral frame crossbeam for improved aesthetics.

Covering sheet steel design

Galvanized Quality Class Z275, corrosive protection class III pursuant to DIN 55928. Polyester coating, 25 µm in different colours pursuant to ems colour table. Optional special coating FS3000® 25µm, specially suitable for use in food processing, in the colours equivalent to RAL 9001 (cream white), RAL 9002 (grey white) and RAL 9010 (pure white). Optional coating food wrapping (LMF), 150 µm, colour equivalent to RAL 9001 (cream white), physiologically harmless, only for inside rooms.

Covering stainless steel design

Nickel-chromium steel (CNS) 1.4301, non-rusting pursuant to DIN 17440, circular-matted, grounded lengthwise, brushed or pattern-rolled (5WL).

Mounting suspension

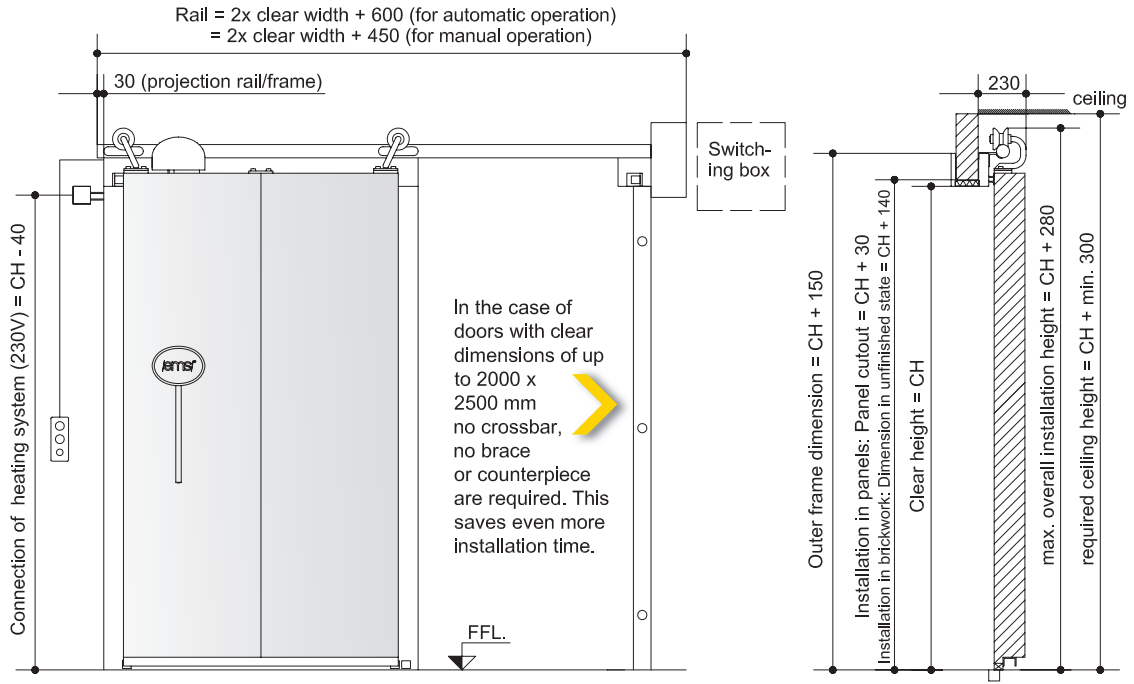
Easy to clean, reliable running and simple handling are special features of the patented hygiene guide rails processed completely from polished special steel LS 3000 (DE 100 11 245.5). Convenient handling is ensured for large dimensions via energy storages. The design which has no corners and edges and no hidden components enables simple, and above all, swift assembly.

Fitting

Standard design: Stainless-steel outside handle with half cylinder profile, stainless-steel inside handle with emergency opening function.

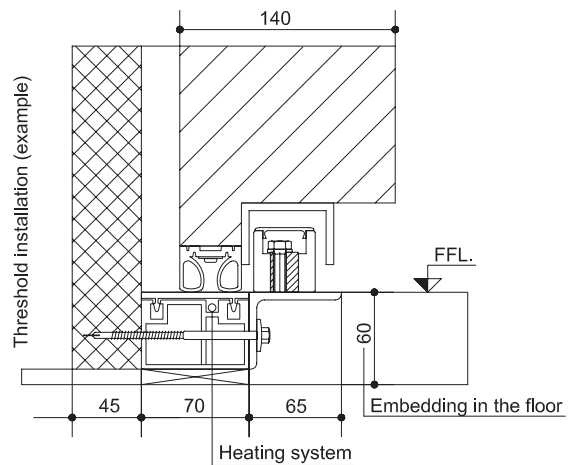
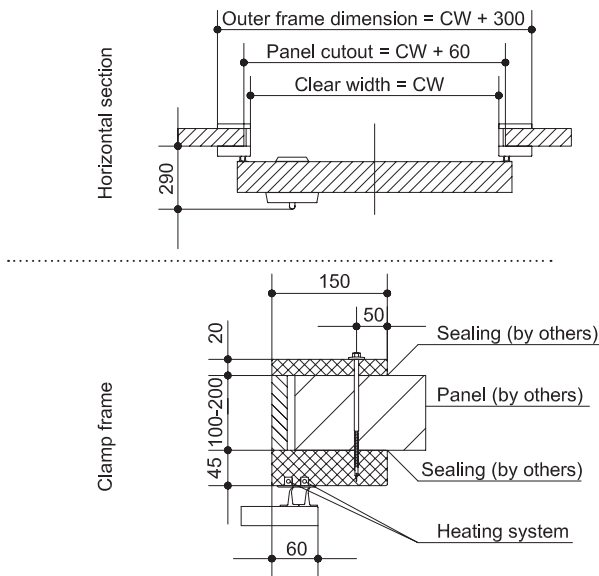
Options:

- Lateral releasing handle
- Windows (heated) WxH = 400x600mm
- Heated switching box
- double-winged design



Detailed sections

Panel installation DIN right (DIN left mirror-inverted)



Installation situation:
Door installation before laying the top flooring

Other installation details on request.

Brickwork installation DIN right (DIN left mirror-inverted)

