

ems freezer room hinged door GTM 120

Features

Fields of application:

Freezer rooms, freezer stores, freezer halls up to -28 °C.
Optional fast-freezing rooms up to -40°C

U value door leaf in W/m²K 0.20

Dimensions:

Clear width (CW): max. 1,500 mm
Clear height (CH): max. 3,800 mm

Other sizes are available as special design, on request.

Details of the ems freezer room hinged door GTM 120

Door leaf

Door leaf thickness 120 mm (fast-freezing room 160 mm), foamed with PU rigid foam, foaming agent CFC-free and HCFC-free.
Vertical butt joint from CW 1,080 mm

Sealing

Three sides held in plastic profiles, grease-resistant EPDM insert sealing. EPDM abrasive rubber sealing at bottom of door leaf. All sealings can be easily replaced.
Option: silicone sealing black or white.

Door frames installed in brickwork

Standard design: metal frame (100 x 70 mm) foamed with PU hard form, metal-sheeted in the design of the door leaf. Fitted, ground level light metal profile threshold. Ready to install with assembly material and installation instructions.

Door frame with panel installation

Clamp frame (100 x 45 mm) metal-sheeted in the design of the door leaf with cold interruption profile. Fitted, ground level light metal profile threshold. Prepared ready to install for the respective panel thickness, with assembly material and installation instructions.
Both designs with electrical frame and sill heating.

Options (on request) i.a.:

- Allround frame (e.g. for cells, 'walk-in-rooms', or similar facilities)

Covering sheet steel design

Galvanized Quality Class Z275, corrosive protection class III pursuant to DIN 55928.
Polyester coating, 25 µm in industrial colours pursuant to ems colour table.

Options (on request):

Food-compatible coating FS3000®, 25 µm, physiologically harmless, in various colours:

Covering stainless steel design

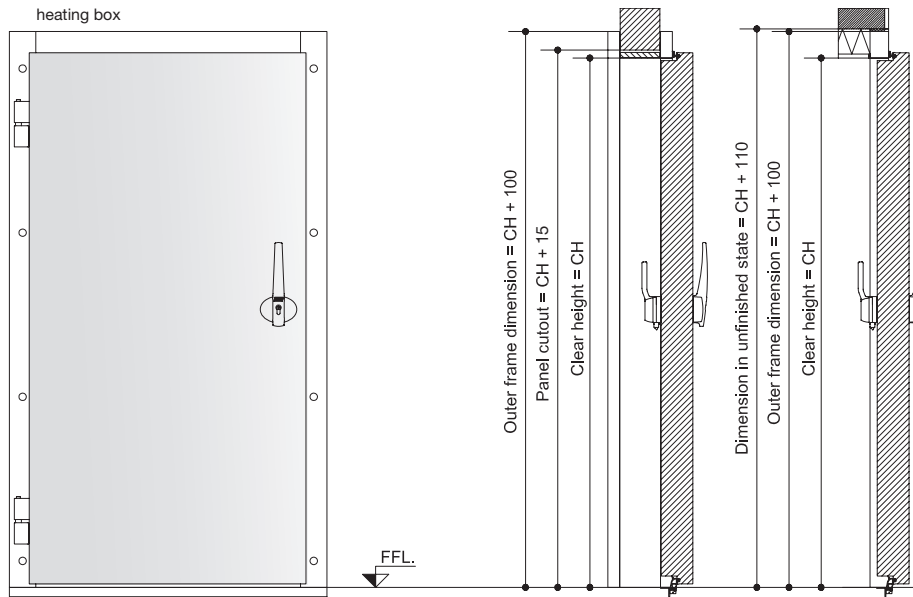
Nickel-chromium steel (CNS) 1.4301, non-rusting pursuant to DIN 17440, circular-matted, grounded, brushed or pattern-rolled lengthwise (5WL).

Door hardware

Standard design: Rising hinges of CNS 1.4301 in plastic compound, three-dimensional adjustment. ems-press handle with three keys

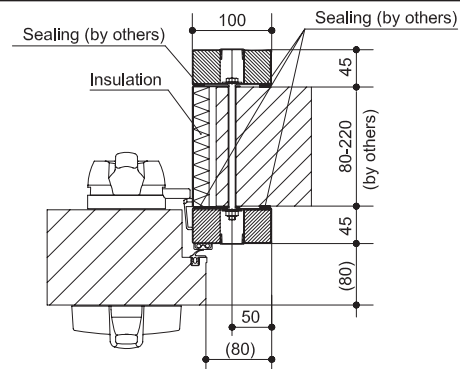
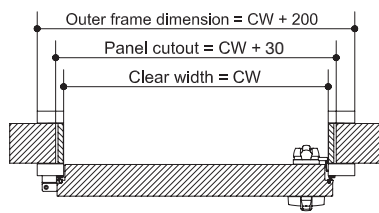
Options (on request) i.a.

- Door contact switch
- Fast-freeze room design
- Overhead door closer
- Fender
- Heated equalizing valve
- Door catch
- Window (heated) 400 x 600 mm.
- Double-winged design

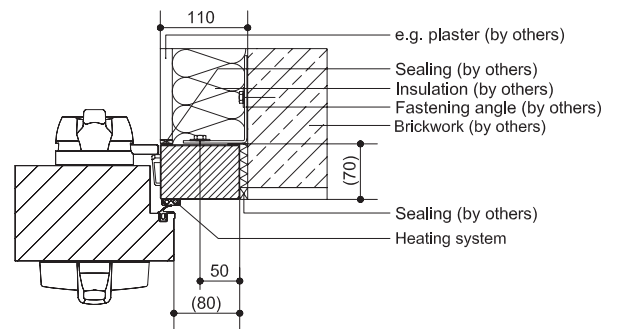
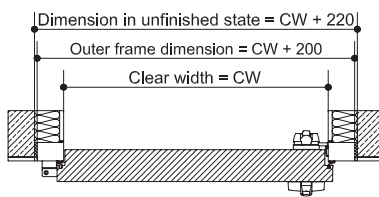


Detailed sections

Panel installation DIN left (DIN right mirror-inverted)



Brickwork installation DIN left (DIN right mirror-inverted)



Threshold installation (example)

